

Subject: Growing Undercover - February 26

Date: Saturday, 28 February 2026 at 9:20:57 am Australian Central Daylight Time

From: PCA

To: Jade Lewis



GROWING UNDERCOVER

FEBRUARY | 2026

UPDATES

IDO Update

Matt Plunkett

Welcome to the February edition of Growing Undercover

The weather has been variable across the country with hot and dry conditions in many growing regions.

Here in NSW, we have seen excellent growing conditions after a wet end to 2025.

Our Industry Advisory Council met last week to discuss a range of issues including sustainability & training priorities for the sector. One of the key challenges for growers is understanding and navigating the labour market, particularly accessing programs such as the Pacific Australia Labour Mobility (PALM) scheme.

PCA is currently talking with service providers to offer webinars and education in this area and welcome any suggestions on topics and specific areas of focus. Other training priorities raised were in chemical use and Integrated Pest & Disease Management, advanced water & nutrient management, and business management tools to improve labour efficiency. If you have ideas on training you'd like PCA to develop, please reach out to us.

In exciting news, the PCA Board has approved the updating of the National Map of Protected Cropping Systems over the next 3 years with leveraged funding from the University of New England, the Future Food Systems CRC and the Australian Government. Despite this funding, PCA must also raise funds to invest further in this valuable resource and as communicated in the January newsletter, we will be calling for voluntary financial contributions soon.

Planning is also well underway for next years PCA Conference being held on the Gold Coast from the 25th - 28th of July 2027. Please place these dates in your calendar and please reach out if you wish to sponsor this event in advance of the prospectus being published.

A prospectus has also gone out to industry and our corporate partners seeking sponsorship for the Greentech Study tour to the Netherlands in June. Several companies have pledged interest and there are still a range of opportunities left. Please reach out to projects@protectedcropping.net.au for further information.

And finally, the Hydroponic Farmers Federation Conference will be held from the 4th to the 6th of May in Melbourne with details and program to be announced shortly.

Until next time, have a great month and stay safe.

Matt Plunkett

0434 147 988

ido@protectedcropping.net.au

Do You Have A Spare 10 Seconds?

We're keen to understand the sustainability priorities in the industry. Click the button below to complete our quick 2-question, 10-second, anonymous poll. Thank you!

[TAKE THE SURVEY](#)

EVENTS

MARCH

**WEBINAR
WEDNESDAY**

DISCOVER GREENTECH AMSTERDAM
2026

Webinar: Discover GreenTech Amsterdam 2026

[Learn More →](#)

JUNE

GREENTECH & NL INDUSTRY TOUR 2026



EXPRESSIONS OF INTEREST

Protected Cropping Australia are seeking expressions of interest from PCA members who would like to participate in a study tour trip that would take in a visit to the Greentech 2026 expo and key industry and farm sites in the Westland area of the Netherlands. The event itself is designed to provide an insight into the latest technologies and developments in the protected cropping industry.

The Greentech event is in itself - massive! With some 550 trade stands and a packed lecture program, the event is certain to provide interest for all growers. For more details on the Greentech itself, please feel free to visit the link shown to provide more insight into this event - <https://youtu.be/5S16-J3dUT8>

Preliminary discussions have revealed strong support from key industry players to facilitate site and generic industry visits. These companies include Rijk Zwaan, Priva and Grodan to name but a few. We anticipate that the tour would be based around the Amsterdam region to facilitate easy access to the Greentech and also provide a central meeting point for the tours. Once we have

Greentech & NL Industry Tour 2026 EOI

[Learn More →](#)

OCTOBER



Myplant & Garden Middle East has opened a new chapter for the global green industry. In Dubai, **business, innovation, sustainability, and international networking** came together to create a unique event for the worldwide floriculture and nursery market, as well as for the future of landscape and urban sustainability.

The success of the first edition — the only exhibition in the Middle East dedicated to landscape and ornamental greenery — was made possible thanks to the active participation, strong interest, and high-quality dialogue

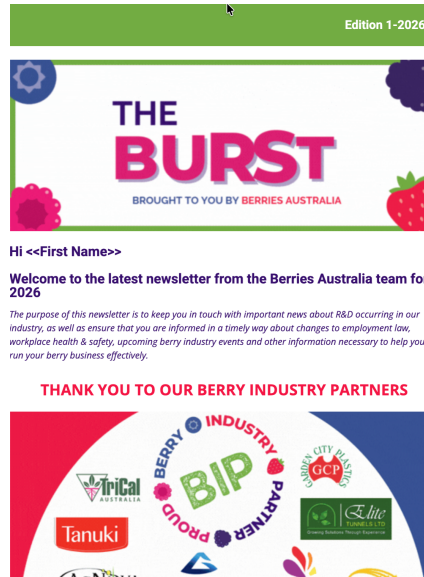
Myplant & Garden Middle East

[Learn More →](#)

INFORMATION

NATIONAL

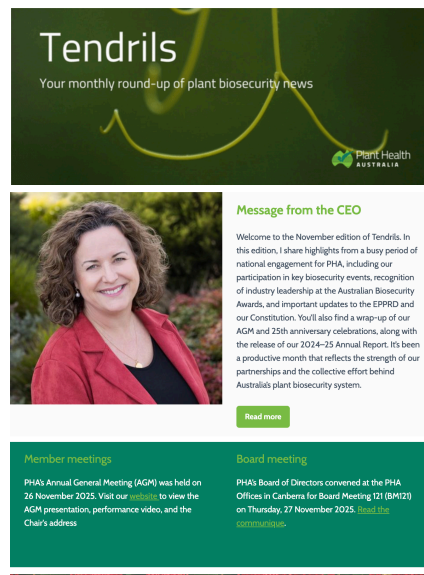
NEWS



Berries Australia - The Burst January 2026

[Learn More →](#)

NEWS



PHA - Tendrils Newsletter January 2026

[Learn More →](#)

SURVEY

**Managing Rockwool and Plastic Waste in I
Cropping**

Industry Consultation

* Required

1. How much of a challenge is rockwool and plastic disposal for you as a grower?

- Not a problem at all
- A minor inconvenience
- A moderate challenge
- A significant challenge

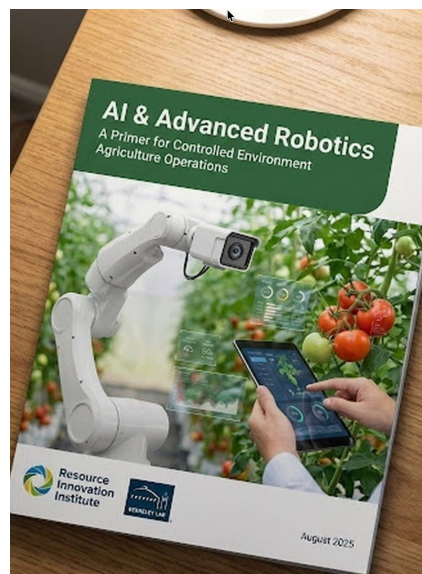
2. Have you tried any recycling or take-back programs in the past?

- Yes
- No

Managing Rockwool and Plastic Waste in PC Survey

[Learn More →](#)

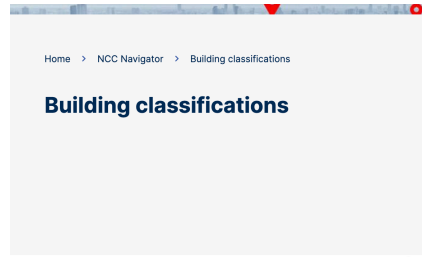
RESOURCE



AI & Advanced Robotics Guide

[Learn More →](#)

RESOURCE



- [Building classifications](#)
- [Class 1 buildings](#)
- [Class 2 buildings](#)
- [Class 3 buildings](#)
- [Class 4 part of a building](#)
- [Class 5 buildings](#)
- [Class 6 buildings](#)
- [Class 7 buildings](#)
- [Class 8 buildings](#)

This guide provide as they are referre

Keywords: National Construct

Target audience: Architects a

The National Construction Co existing buildings) in Australia then how buildings are referre

The following is a general rep not address any state or territ

NCC - Building Classification Guide

[Learn More →](#)

RESOURCES

Supporting the needs of industry with mapping tools. [Craig Shephard](#) is a land-use mapping expert and Senior Researcher within the [Applied Agricultural Remote Sensing Centre \(AARSC\)](#), playing an instrumental role alongside Prof. [Andrew Robson](#) in creating Australia's first map of protected cropping systems.

In the following clip, Craig outlines his experience in land-use mapping and the development of the Australian Tree Crop Map, noting that industry feedback showed it needed richer information. This led to a new project, building on the Protected Cropping Map, to enable tree crop industries to create more detailed, fit-for-purpose spatial maps.

To learn more and to watch our full video with the AARSC mapping team, click here: <https://lnkd.in/gq7m7mnf>

[#treecrops](#) [#spatialmapping](#) [#remotesensing](#) [#mapping](#)

The Australian Protected Cropping Map Dashboard is a collaboration led by [Hort Innovation](#) and the [University of New England \(AU\)](#)'s Applied Agricultural Remote Sensing Centre (AARSC), alongside [Protected Cropping Australia LTD](#), NSW Local Land Services, industry bodies and Future Food Systems.

Protected Cropping Mapping Project

[Learn More →](#)

NEWS



Hydroponic Farmers Federation

CONFERENCE 2026



Sustainable Growing



The Hydroponic Farmers Federation Conference 2026 is being held from 4 - 6 May in Melbourne.

[Learn More →](#)

MEMBER ADVERTISEMENTS

AIPH - FLORACULTURE INTERNATIONAL



fc*i*



WWW.FLORACULTUREINTERNATIONAL.COM
FEBRUARY 2026

LOGISTICS AS STRUCTURE
IN CUT FLOWERS

**Why pressure is built in,
not accidental**

WHEN CUT FLOWER LOGISTICS
BECOMES MARKET ACCESS

**Why compliance is now a
competitive condition**

WHY PREPARATION DEFINES
CUT FLOWER PERFORMANCE

**Inside the decisions that
protect quality**

THE RACE AGAINST TIME

Cut Flower Logistics Under Peak Pressure



[Unsubscribe](#)

Protected Cropping Australia
PO Box 470, Roseville

Sydney, Australia
+61 2 9037 3166

admin@protectedcropping.net.au